

1,158 SF Office Space for Lease

5960 Getwell Road | Southaven, MS



Conveniently situated on Getwell Road off the heavily-traveled Goodman Road, this well-configured office space in Town Square is the ideal central N. Mississippi location for serving clients in Southaven, Olive Branch and expanding neighborhoods to the south. Easy access at the lighted intersection of Getwell and Nail Roads with abundant parking.

- Competitive lease terms
- Excellent demographics
- Abundant customer parking
- Highly-visible monument signage
- Other tenants in this popular mixed-use center, include Lost Pizza, Mesquite Chop House, Edward Jones Investments, Belle Ross Salon and Spa, and Impressions Aesthetics.

FOR INFORMATION CONTACT:

Michael Greenberg, CCIM, CPM

Chief Executive Officer

901.507.3429

mgreenberg@mrgmemphis.com

2024 Summary	1 mile	3 miles	5 miles
Population	7,462	30,200	72,520
Households	2,458	10,621	26,253
Average Household Income	\$117,670	\$110,517	\$96,473
Median Household Income	\$94,962	\$92,094	\$79,188

Makowsky Ringel Greenberg, LLC

1010 June Road, Suite 200

P.O. Box 241990

Memphis, TN 38124

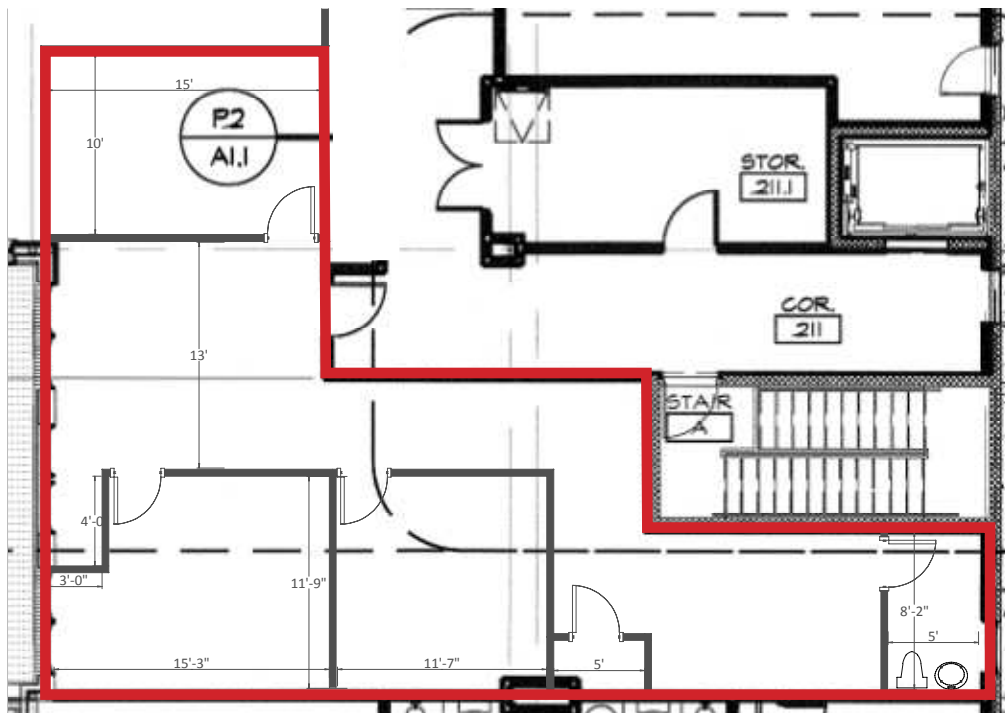
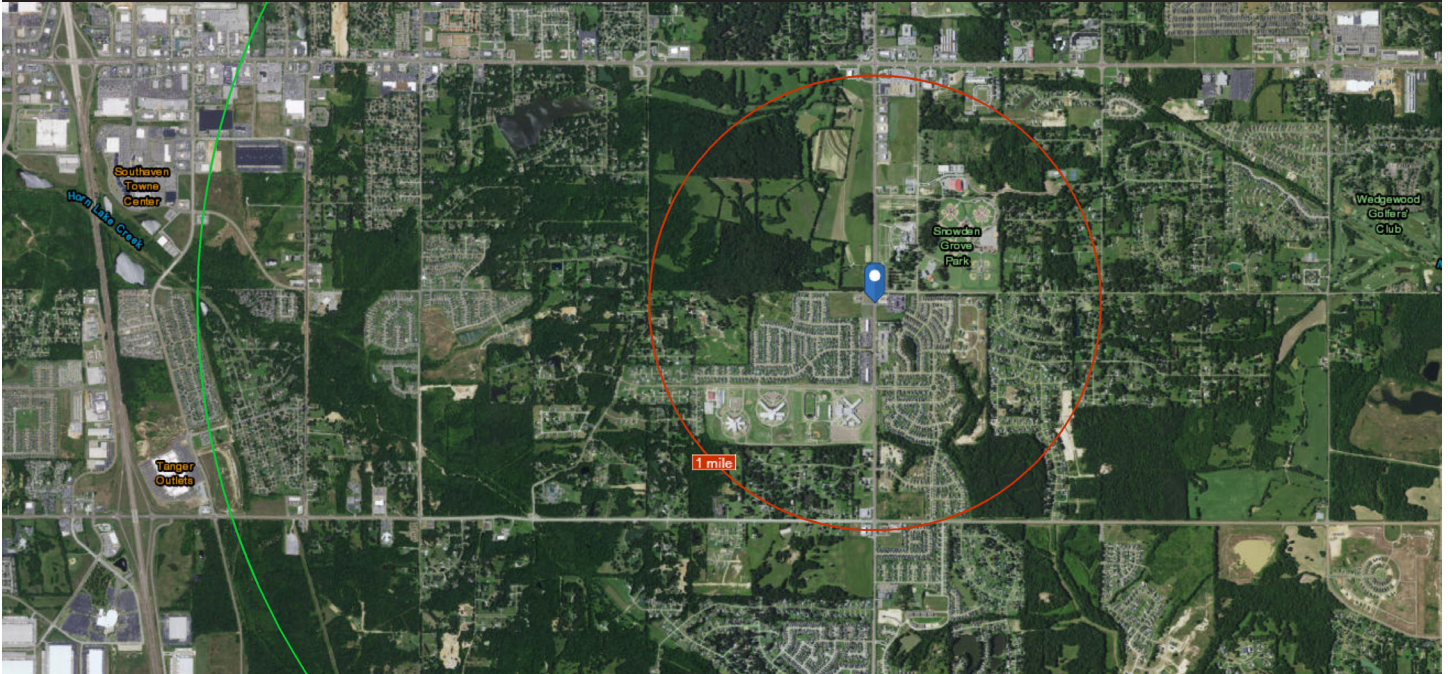
Phone: 901.683.2220

Fax: 901.507.3440

www.mrgmemphis.com/commercial

All information deemed reliable but not warranted.

5960 Getwell Road



FOR INFORMATION CONTACT:

Michael Greenberg, CCIM, CPM
Chief Executive Officer
901.507.3429
mgreenberg@mrghmemphis.com

**Makowsky
Ringel
Greenberg LLC**
Multi-Family & Commercial Real Estate

5960 Getwell Road



FOR INFORMATION CONTACT:

Michael Greenberg, CCIM, CPM
Chief Executive Officer
901.507.3429
mgreenberg@mrghmemphis.com

 **Makowsky
Ringel
Greenberg** LLC
Multi-Family & Commercial Real Estate