

Covington Way I

2093-2099 Thomas Road • Memphis, TN 38134



Free-standing building with dock-high doors on the front and drive-in doors on the rear. Ideal for bulk deliveries and for local and regional service companies.

BUILDING AMENITIES

- 126,500 square foot industrial park
- Bays of 3,000 SF with up to 15,000 SF contiguous
- All bays have dock high and drive in doors
- 18 foot clear span; 22 feet at apex
- Conveniently located near I-40/240 interchange



All information deemed reliable but not warranted.

FOR INFORMATION CONTACT:

Roger McLemore

Vice President
901.507.3428
rmclemore@mrgmemphis.com

Gary Lubin

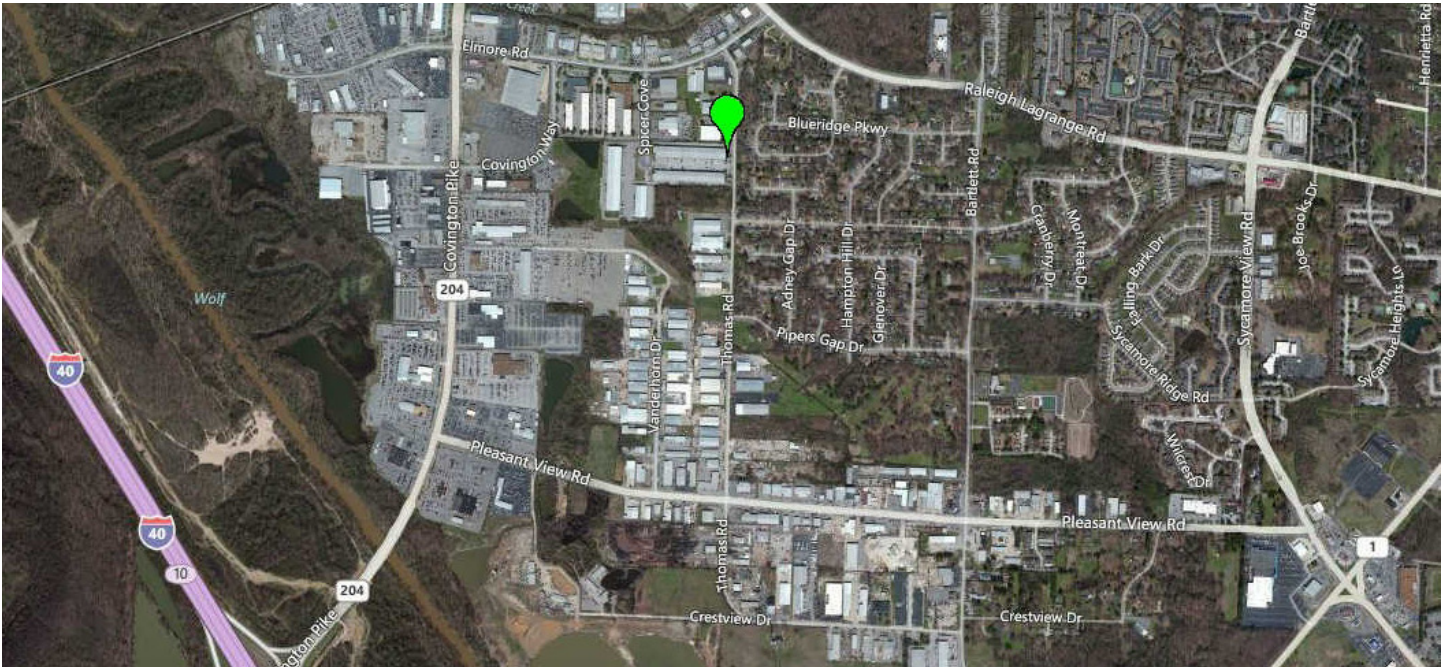
Vice President
901.507.3425
glubin@mrgmemphis.com

Makowsky Ringel Greenberg, LLC

1010 June Road, Suite 200
P.O. Box 241990
Memphis, TN 38124
Phone: 901.683.2220
Fax: 901.507.3440

www.mrgmemphis.com/commercial

Covington Way I



| THOMAS ROAD | | | |
|-------------|--|------|----|
| 2099 | | 2093 | |
| 1 | | | 1 |
| 2 | | | 2 |
| 3 | | | 3 |
| 4 | | | 4 |
| 5 | | | 5 |
| 6 | | | 6 |
| 7 | | | 7 |
| 8 | | | 8 |
| 9 | | | 9 |
| 10 | | | 10 |
| 11 | | | 11 |
| 12 | | | 12 |
| 13 | | | 13 |
| 14 | | | 14 |
| 15 | | | 15 |
| 16 | | | 16 |
| 17 | | | 17 |
| 18 | | | 18 |
| 19 | | | 19 |
| 20 | | | 20 |
| 21 | | | 21 |
| 22 | | | 22 |
| 23 | | | 23 |

SPICER ROAD

FOR INFORMATION CONTACT:

Roger McLemore
 Vice President
 901.507.3428
 rmclemore@mrghmemphis.com

Gary Lubin
 Vice President
 901.507.3425
 glubin@mrghmemphis.com



Covington Way II

2095 Spicer Cove • Memphis, TN 38134



Free-standing building with dock-high doors on the front and drive-in doors on the rear. Ideal for bulk deliveries and for local and regional service companies.

BUILDING AMENITIES

- Bays of 3,000 SF with up to 15,000 SF contiguous
- 208 volt 3 phase
- Column size 30' x 100'
- Highly competitive rates
- 2 1/2 miles from I-40 at Sycamore View
- Air-conditioned office and lavatories
- Ample parking



FOR INFORMATION CONTACT:

Roger McLemore

Vice President
901.507.3428
rmclemore@mrgmemphis.com

Gary Lubin

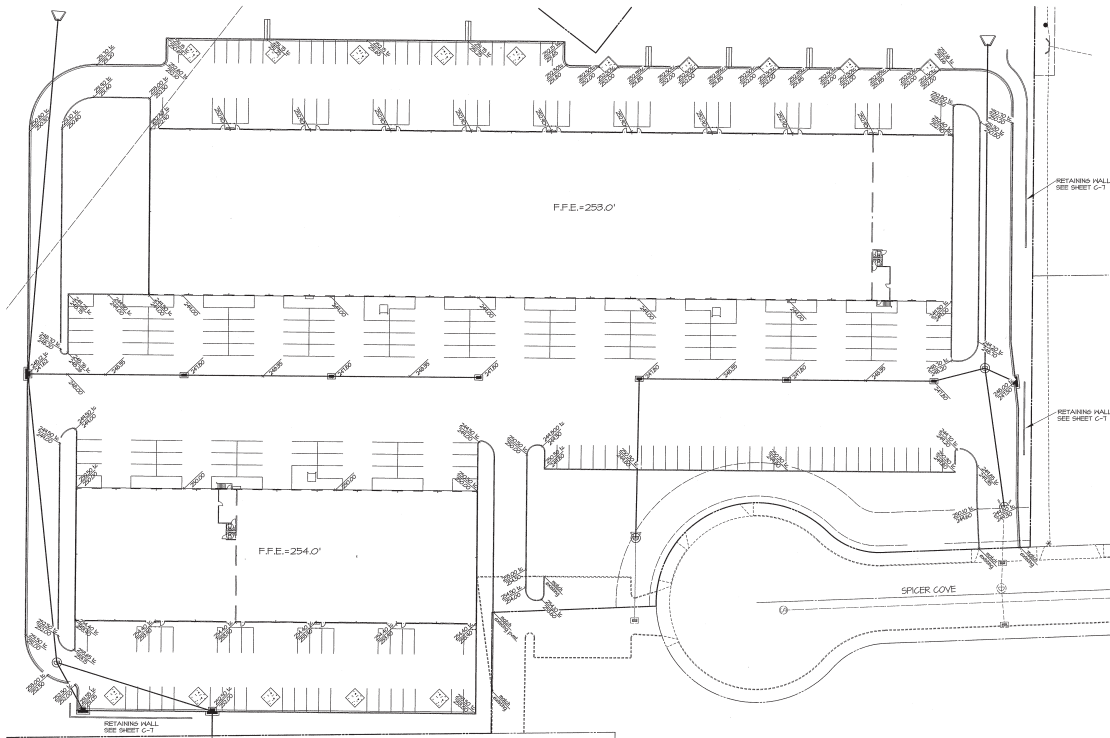
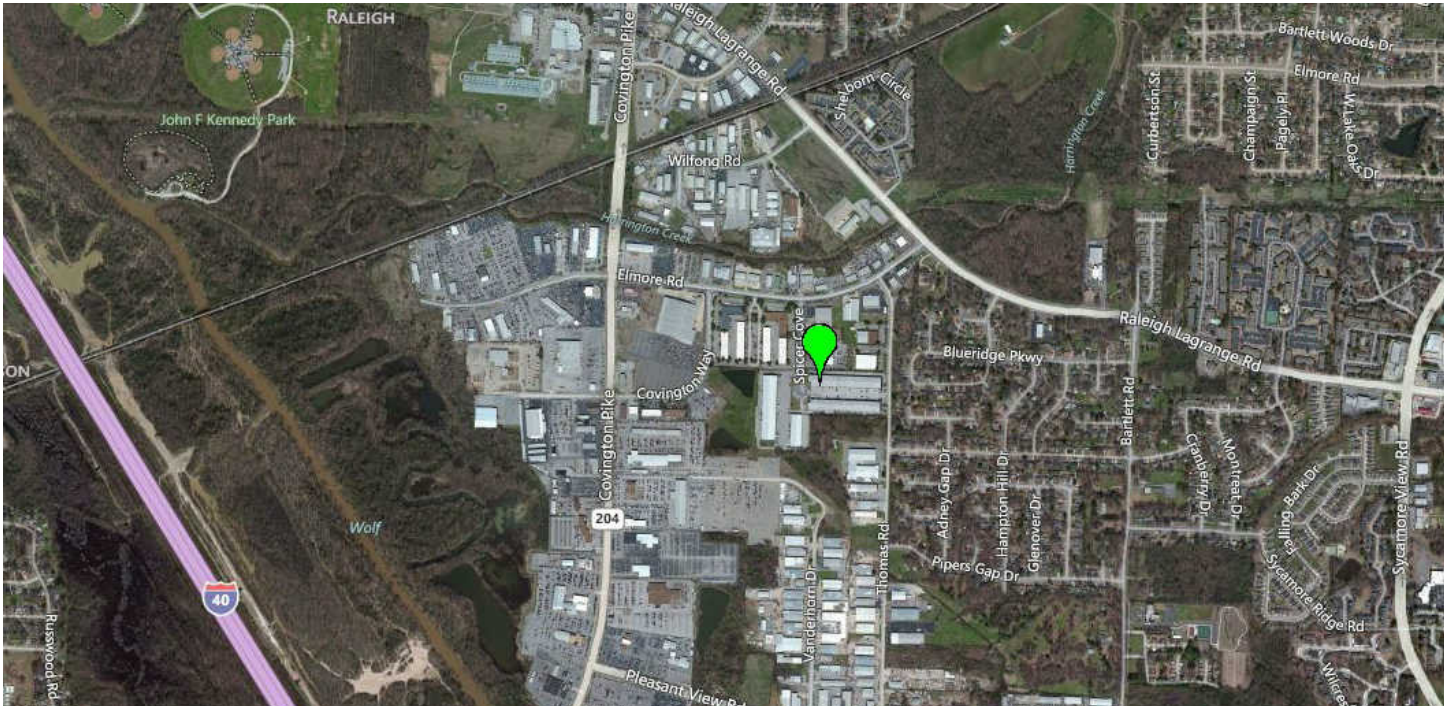
Vice President
901.507.3425
glubin@mrgmemphis.com

Makowsky Ringel Greenberg, LLC

1010 June Road, Suite 200
P.O. Box 241990
Memphis, TN 38124
Phone: 901.683.2220
Fax: 901.507.3440

www.mrgmemphis.com/commercial

Covington Way II



FOR INFORMATION CONTACT:

Roger McLemore
 Vice President
 901.507.3428
 rmclemore@mrghmemphis.com

Gary Lubin
 Vice President
 901.507.3425
 glubin@mrghmemphis.com

