

Covington Way II

2095 Spicer Cove • Memphis, TN 38134



Free-standing building with dock-high doors on the front and drive-in doors on the rear. Ideal for bulk deliveries and for local and regional service companies.

BUILDING AMENITIES

- Bays of 3,750 SF with up to 15,000 SF contiguous
- 208 volt 3 phase
- Column size 30' x 100'
- Highly competitive rates
- 2 1/2 miles from I-40 at Sycamore View
- Air-conditioned office and lavatories
- Ample parking



FOR INFORMATION CONTACT:

Roger McLemore

Vice President

901.507.3428

rmclemore@mrghmemphis.com

Makowsky Ringel Greenberg, LLC

1010 June Road, Suite 200

P.O. Box 241990

Memphis, TN 38124

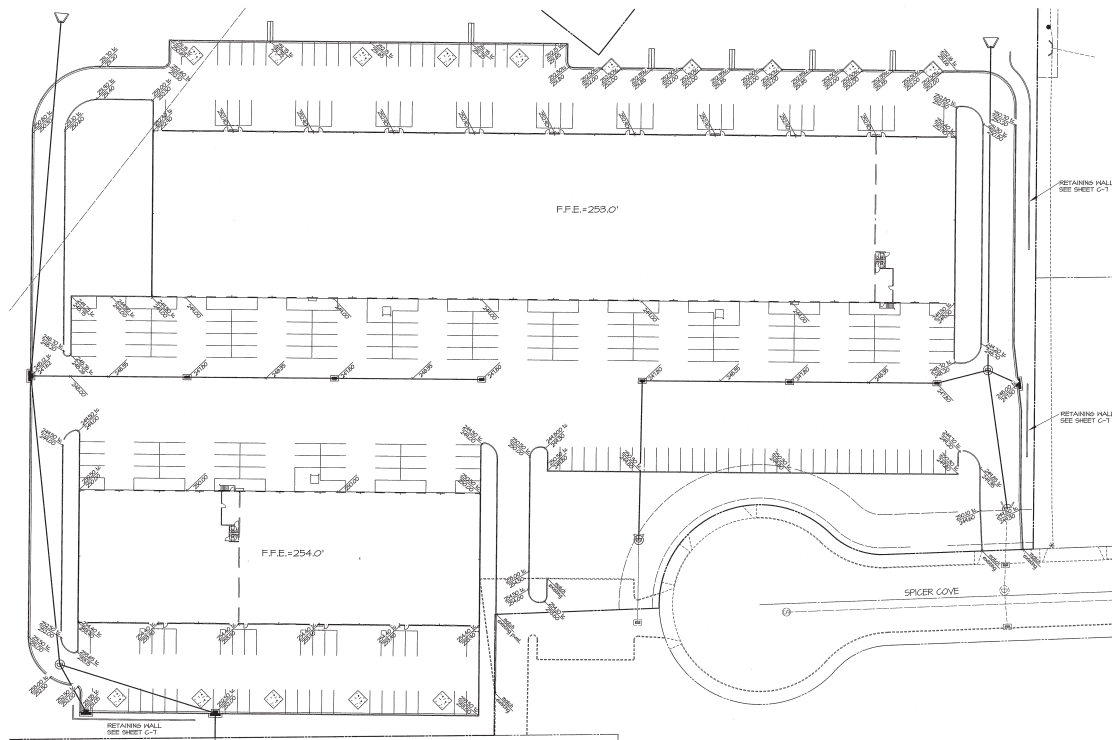
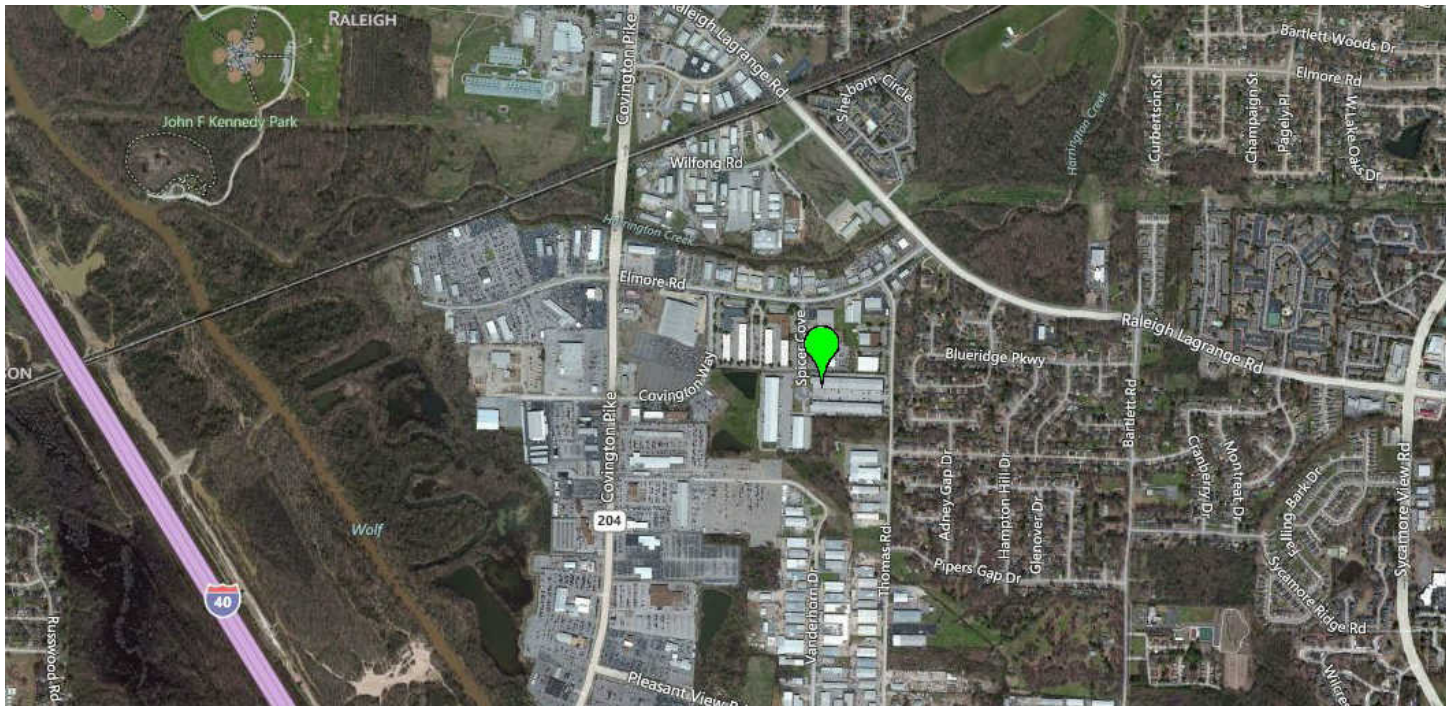
Phone: 901.683.2220

Fax: 901.507.3440

www.mrgmemphis.com/commercial

All information deemed reliable but not warranted.

Covington Way II



FOR INFORMATION CONTACT:

Roger McLemore

Vice President

901.507.3428

rmclemore@mrghmemphis.com

**Makowsky
Ringel
Greenberg LLC**
Multi-Family & Commercial Real Estate