

Plum Tree Shops

5798 - 5824 Winchester Rd. • Memphis, Tennessee



High-visibility Winchester Road location with ample parking. Over 75,000 households within a 5-mile radius. Current tenants include Nail Club, Platinum Kutz, Express Loans, Allstate Insurance, Dr. Willis B. Davis, DDS, and ACE Cash Express.

BUILDING AMENITIES

- Bays 1,300 SF
- Nearly 25,000 VPD (vehicles per day)
- Professionally managed
- Ample parking
- Excellent visibility



2024 Summary	1 mile	3 miles	5 miles
Population	13,905	98,898	205,920
Households	4,857	35,934	77,842
Average Household Income	\$50,710	\$63,925	\$83,953
Median Household Income	\$36,385	\$46,145	\$56,291

FOR INFORMATION CONTACT:

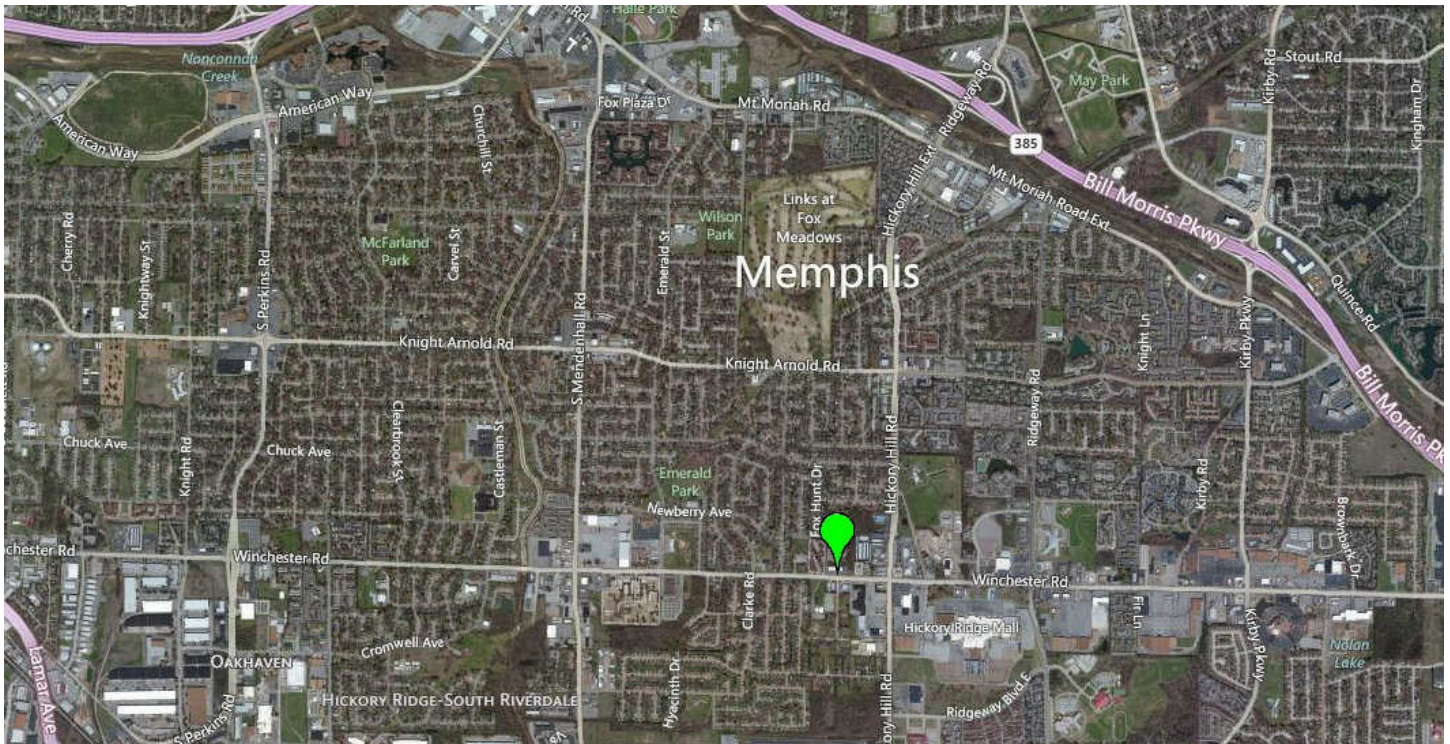
Dana Jones
901.507.3453
djones@mrgmemphis.com

Michael Greenberg
901.507.3429
mgreenberg@mrgmemphis.com

Makowsky Ringel Greenberg, LLC
1010 June Road, Suite 200
P.O. Box 241990
Memphis, TN 38124
Phone: 901.683.2220
Fax: 901.507.3440

www.mrgmemphis.com/commercial

Plum Tree Shops

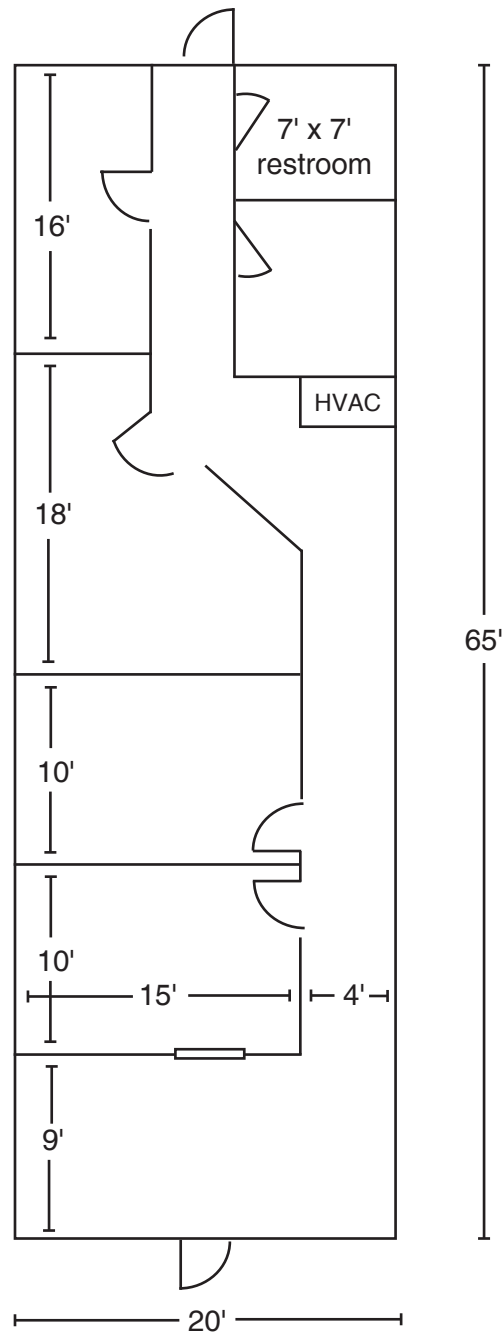


1300 SF	1300 SF	1300 SF	1300 SF	1300 SF	1300 SF	1300 SF	1300 SF	1300 SF	1300 SF	1300 SF	2600 SF
Better Days Tax Service	Acceptance Insurance	Mi Favorita Mini Market	Nail Club	Nail Club	Express Loans	Available	Renpro Renal Services	Dr. Willis B. Davis	Xceeding Partnership	Ace Cash Express	Platinum Kutz
5798	5800	5802	5804	5806	5808	5812	5814	5816	5818	5820	5822

Makowsky Ringel Greenberg, LLC
 1010 June Road, Suite 200
 P.O. Box 241990
 Memphis, TN 38124
 Phone: 901.683.2220
 Fax: 901.507.3440

**Makowsky
 Ringel
 Greenberg LLC**
 Multi-Family & Commercial Real Estate

Plum Tree Shops



Makowsky Ringel Greenberg, LLC
1010 June Road, Suite 200
P.O. Box 241990
Memphis, TN 38124
Phone: 901.683.2220
Fax: 901.507.3440

MRG Makowsky
Ringel
Greenberg LLC
Multi-Family & Commercial Real Estate