

Plum Tree Shops

5814 Winchester Rd. • Memphis, Tennessee

**Makowsky
Ringel
Greenberg** LLC
Multi-Family & Commercial Real Estate



High-visibility Winchester Road location with ample parking. Over 78,000 households within a 5-mile radius. Current tenants include Nail Club, Platinum Kutz, Express Loans, Dr. Willis B. Davis, DDS, and ACE Cash Express.

BUILDING AMENITIES

- 1,300 SF Available
- Nearly 25,000 VPD (vehicles per day)
- Professionally managed
- Ample parking
- Excellent visibility



FOR INFORMATION CONTACT:

Dana Jones

901.507.3453

djones@mrgmemphis.com

Michael Greenberg

901.507.3429

mgreenberg@mrgmemphis.com

2025 Summary	1 mile	3 miles	5 miles
Population	15,307	93,366	196,173
Households	6,086	36,280	78,641
Average Household Income	\$55,198	\$73,233	\$95,853
Median Household Income	\$44,875	\$56,203	\$69,337

Makowsky Ringel Greenberg, LLC

1010 June Road, Suite 200

P.O. Box 241990

Memphis, TN 38124

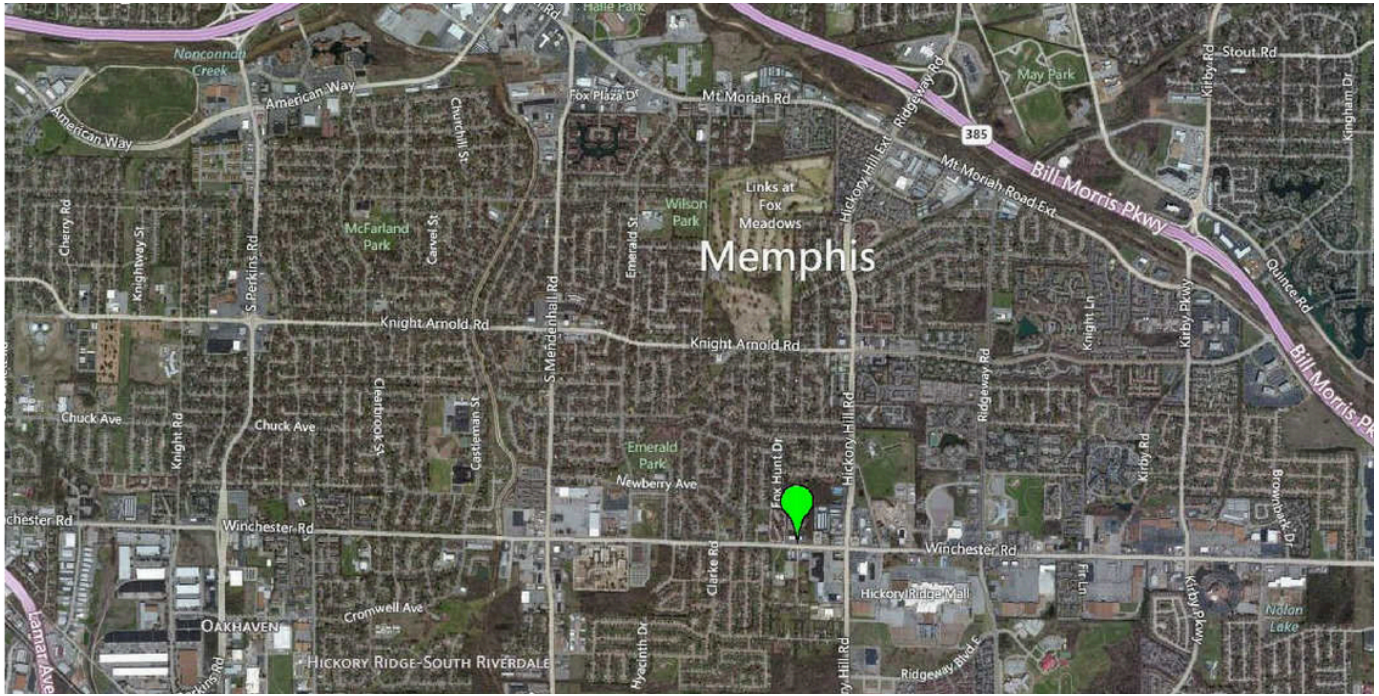
Phone: 901.683.2220

Fax: 901.507.3440

www.mrgmemphis.com/commercial

All information deemed reliable but not warranted.

Plum Tree Shops



Makowsky Ringel Greenberg, LLC
1010 June Road, Suite 200
P.O. Box 241990
Memphis, TN 38124
Phone: 901.683.2220
Fax: 901.507.3440

Makowsky Ringel Greenberg, LLC
Multi-Family & Commercial Real Estate