

Retail Space for Lease

5960 Getwell Road | Southaven, MS



Lease 1,260 square feet in Southaven's iconic Town Square perfectly suited for a high-end ladies boutique or other clothing or shoe store, yoga or fitness studio, or office space.

AMENITIES

- Close to BankPlus Amphitheater and Snowden Grove Ballpark
- Competitive lease terms
- Excellent demographics
- Abundant customer parking
- Highly-visible monument signage

Don't miss this opportunity to join other tenants in this popular mixed-use center, including Lost Pizza, Mesquite Chop House, 10th Inning Bar & Grill, Edward Jones Investments, Impressions Aesthetics, and Guaranty Bank.

2024 Summary	1 mile	3 miles	5 miles
Population	7,462	30,200	72,520
Households	2,458	10,621	26,253
Average Household Income	\$117,670	\$110,517	\$96,473
Median Household Income	\$94,962	\$92,094	\$79,188

FOR INFORMATION CONTACT:

Roger McLemore

Vice President

901.507.3428

rmclemore@mrgmemphis.com

Jim Brown, CCIM

Brown Properties

662.393.2255

jimbrown187@gmail.com

BROWN PROPERTIES

COMMERCIAL & INDUSTRIAL REAL ESTATE
SALES • LEASING • CONSULTING

Makowsky Ringel Greenberg, LLC

1010 June Road, Suite 200

P.O. Box 241990

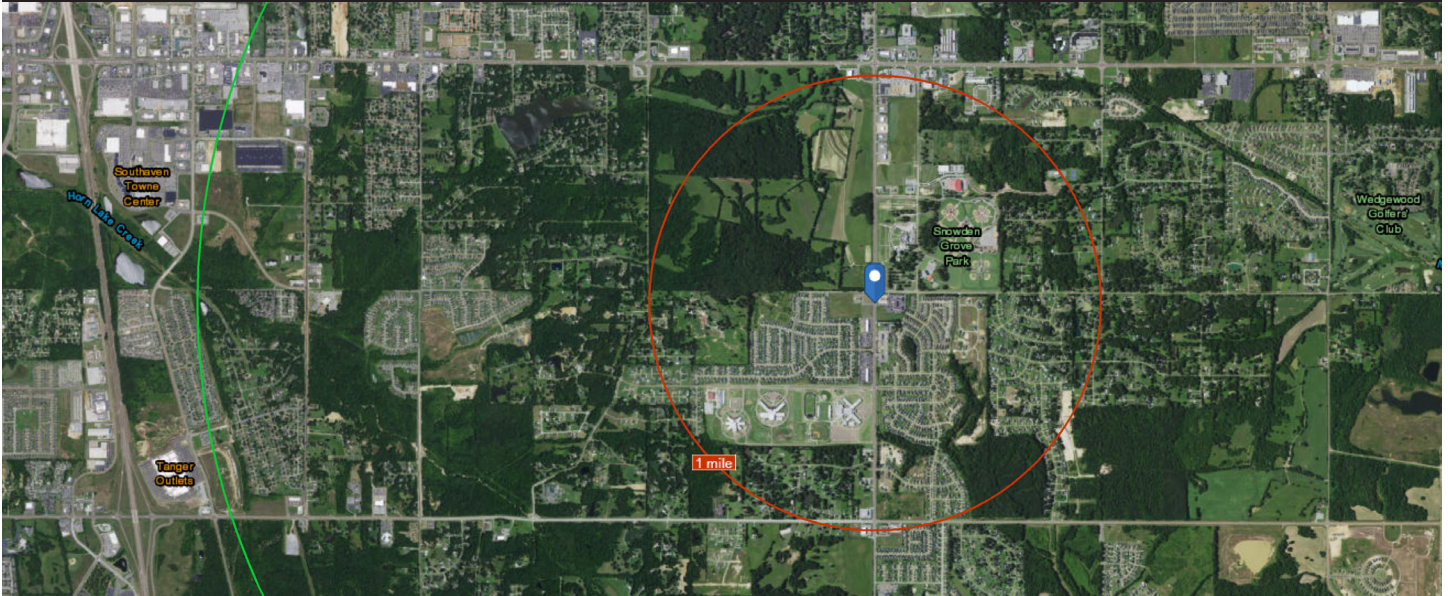
Memphis, TN 38124

Phone: 901.683.2220

Fax: 901.507.3440

www.mrgmemphis.com/commercial

5960 Getwell Road



FOR INFORMATION CONTACT:

Roger McLemore

Vice President

901.507.3428

rmclemore@mrgmemphis.com

Jim Brown, CCIM

662.393.2255

jimbrown187@gmail.com

**Makowsky
Ringel
Greenberg** LLC
Multi-Family & Commercial Real Estate