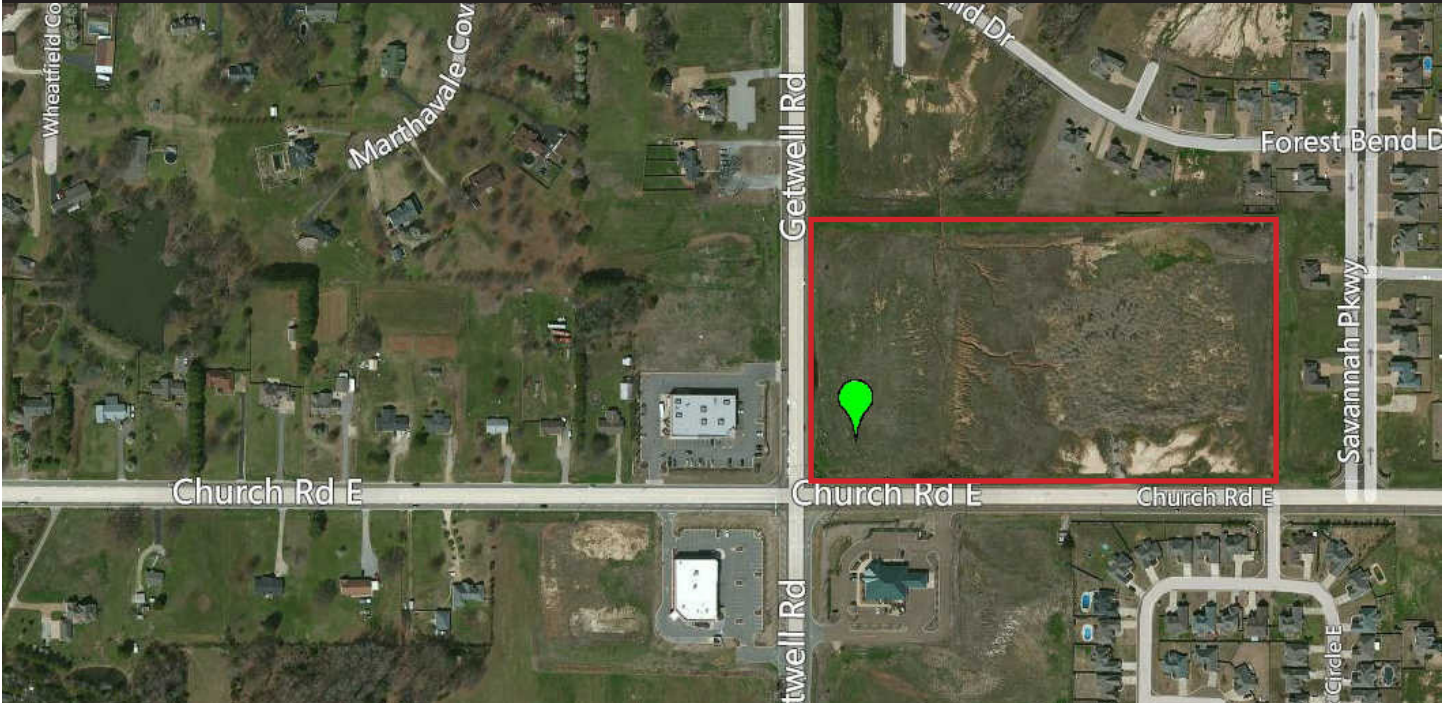


For Sale or Lease: 15.25 acres

Getwell & Church Roads | Southaven, MS



15.25 level acres for sale at the northeast corner of Getwell and Church Roads. Only vacant corner lot at this intersection that houses a CVS, a Walgreens, and First Security Bank. Best use of land would be a combination of retail, office and residential. Land can be subdivided into smaller parcels.

AMENITIES

- Will accommodate approximately 150,000 SF of improvements
- Zoned C-4 (Neighborhood Commercial)
- Approximate VPD (vehicles per day) on Church of 14,000

2024 Summary	1 mile	3 miles	5 miles
Population	6,844	29,405	71,019
Households	2,276	10,284	25,711
Average Household Income	\$118,358	\$111,378	\$97,052
Median Household Income	\$95,513	\$92,510	\$79,648

FOR INFORMATION CONTACT:

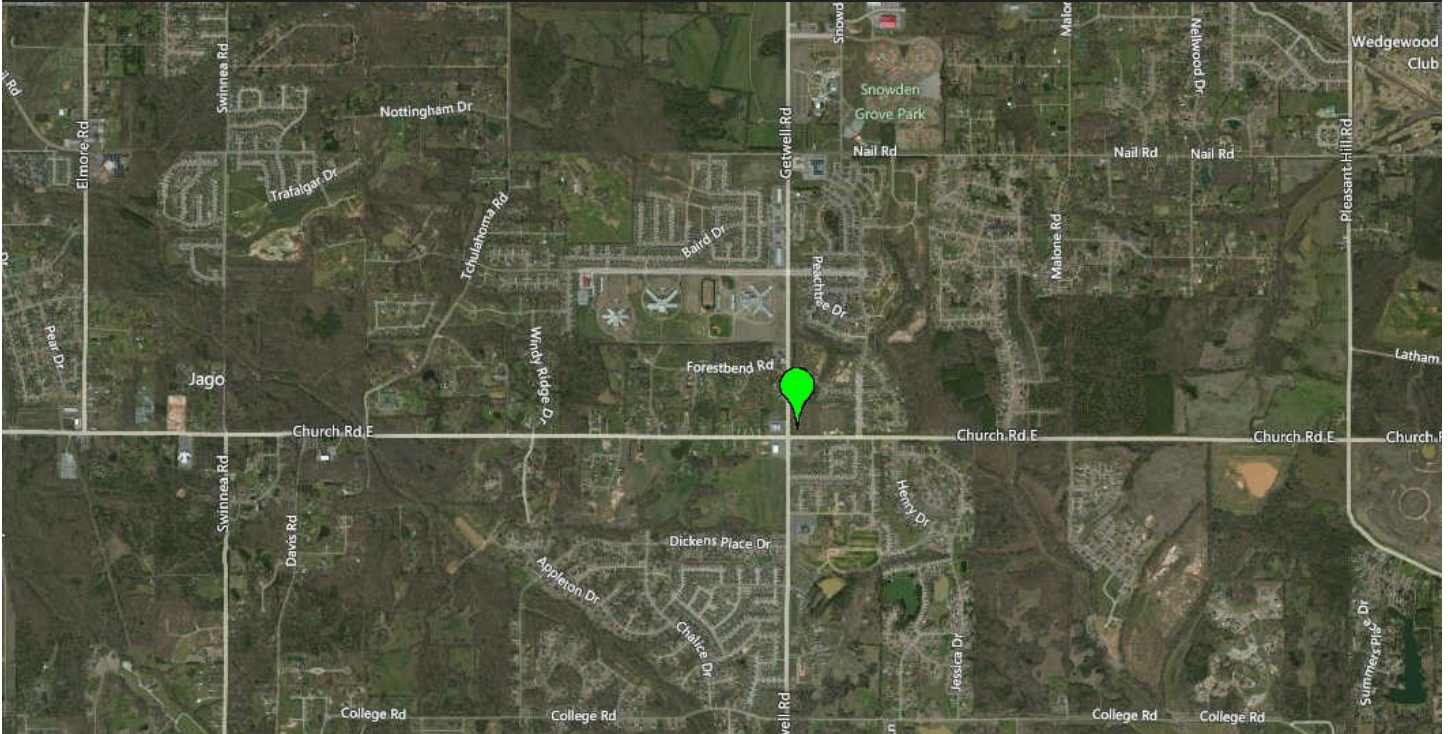
Michael Greenberg, CCIM, CPM
Chief Executive Officer
901.507.3429
mgreenberg@mrgmemphis.com

Roger McLemore
Vice President
901.507.3428
rmclmore@mrgmemphis.com

Makowsky Ringel Greenberg, LLC
1010 June Road, Suite 200
P.O. Box 241990
Memphis, TN 38124
Phone: 901.683.2220
Fax: 901.507.3440

www.mrgmemphis.com/commercial

Getwell and Church Roads



Makowsky Ringel Greenberg, LLC
1010 June Road, Suite 200
P.O. Box 241990
Memphis, TN 38124
Phone: 901.683.2220
Fax: 901.507.3440

