

Shops of Cobblestone

3451 Goodman Rd • Southaven, Mississippi



Conveniently located on highly-traveled Goodman Road just east of Getwell and approximately a half mile north of Snowden Grove Park and DeSoto County Central Schools Campus. Current tenants include Family Medical Practice of N. Mississippi, Rancho Grande, Lenny's Sub Shop, Beltone, Heart Attack and Stroke Prevention, Sylvan Learning Center, and Desoto Dental.

BUILDING AMENITIES

- C4 zoning (Commercial)
- Bays of 1,300 SF (20' x 65')
- Over 34,000 VPD (vehicles per day)
- Professionally managed
- Ample parking
- Great visibility

2024 Summary	1 mile	3 miles	5 miles
Population	1,192	32,970	78,498
Households	439	11,419	28,044
Average Household Income	\$109,170	\$107,006	\$90,398
Median Household Income	\$93,366	\$90,134	\$74,264

FOR INFORMATION CONTACT:

Roger McLemore

Vice President

901.507.3428

rmclemore@mrgmemphis.com

Makowsky Ringel Greenberg, LLC

1010 June Road, Suite 200

P.O. Box 241990

Memphis, TN 38124

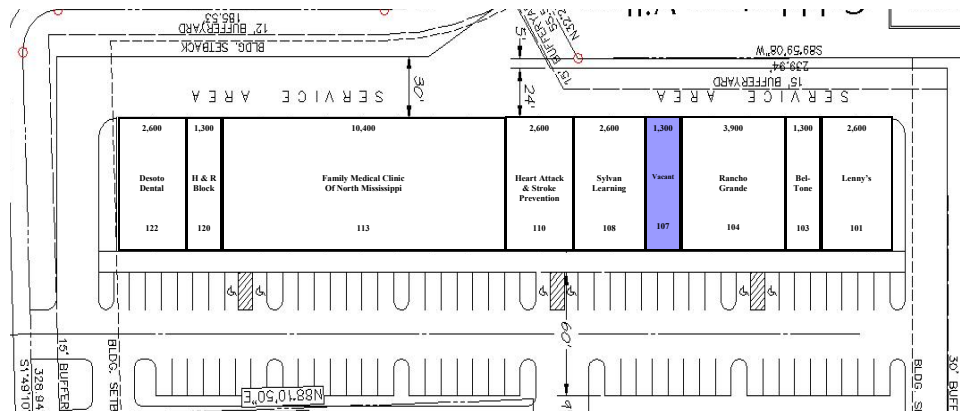
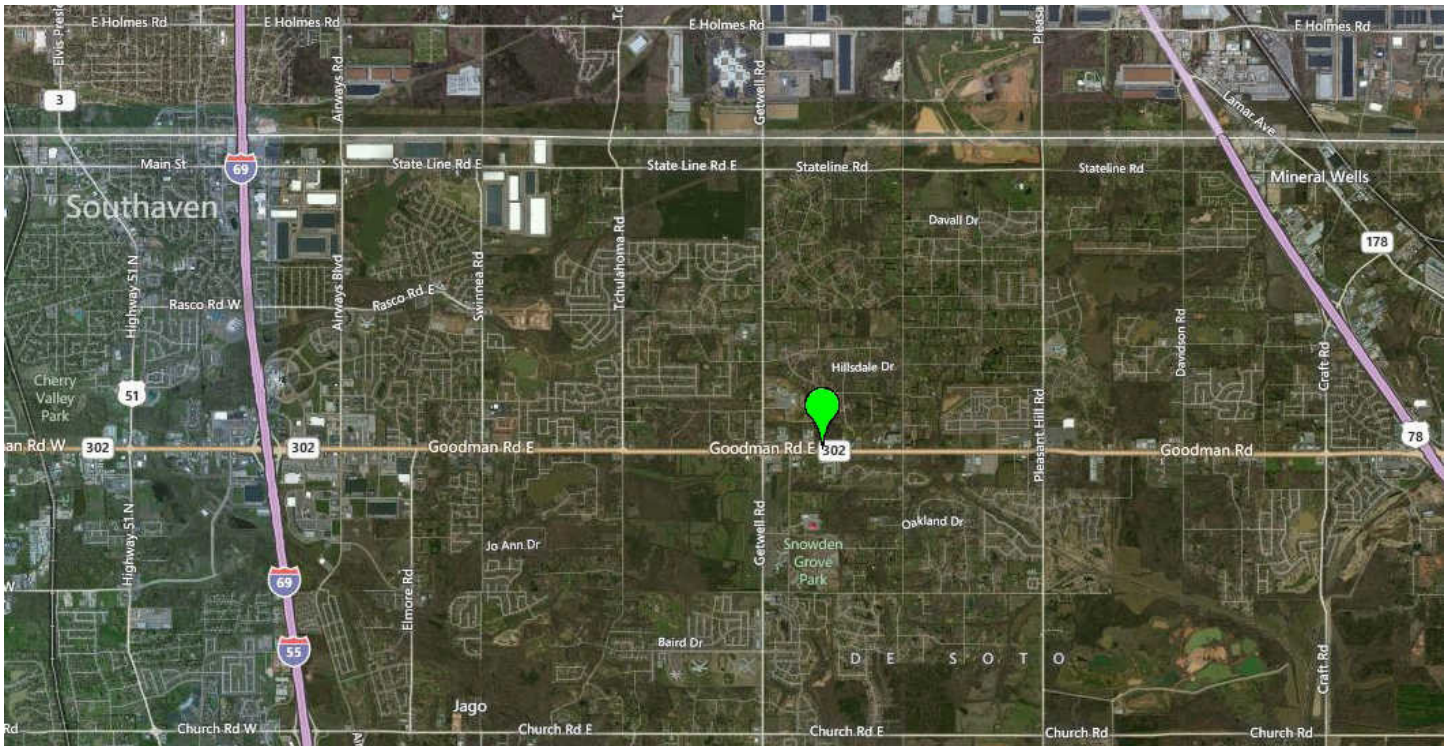
Phone: 901.683.2220

Fax: 901.507.3440

www.mrgmemphis.com/commercial

All information deemed reliable but not warranted.

Shops of Cobblestone



Makowsky Ringel Greenberg, LLC
 1010 June Road, Suite 200
 P.O. Box 241990
 Memphis, TN 38124
 Phone: 901.683.2220
 Fax: 901.507.3440

**Makowsky
 Ringel
 Greenberg LLC**
 Multi-Family & Commercial Real Estate