

Office Space Near Oxford Square

1200 Jefferson, Suite 200 | Oxford, MS 38665



Everything the Oxford Square has to offer is a short walk from this unique three-story live/work/play building featuring 1st-floor parking/office space, 2nd-floor office space, and 3rd-floor condos. Located on Jefferson Street in the 8th-ranking "Micropolitan" of Oxford, Mississippi, the available 2nd-story office space of up to 6,000 square feet offers excellent proximity and access to the heart of Oxford, Ole Miss, and the vibrant Oxford Square, packed with restaurants, shopping, hotels and other services. Join a variety of professional services businesses in a city with projected 10-year job growth of more than 50%.

BUILDING AMENITIES

- Perfect for regional satellite office or locally-owned business desiring to move operations to the Oxford Square
- +/- 3,000 SF up to +/- 6,000 SF of contiguous 2nd-floor office space:
 - Reception area
 - Private offices, with several featuring patios
 - Breakroom, copy room, conference room
- Elevator access
- 14 executive parking spaces in building parking garage
- Readily available public employee parking lots, on-street parking or in nearby newly constructed parking garage
- Locally owned and professionally operated
- Transportation access to Oxford University Transit (OUT) bus lines and approximately 1.2 miles from Oxford Regional Airport.
- New \$300M+ Baptist Memorial Hospital services the city and surrounding counties

FOR INFORMATION CONTACT:

Roger McLemore

Vice President

901.507.3428

rmclemore@mrgmemphis.com

Makowsky Ringel Greenberg, LLC

1010 June Road, Suite 200

P.O. Box 241990

Memphis, TN 38124

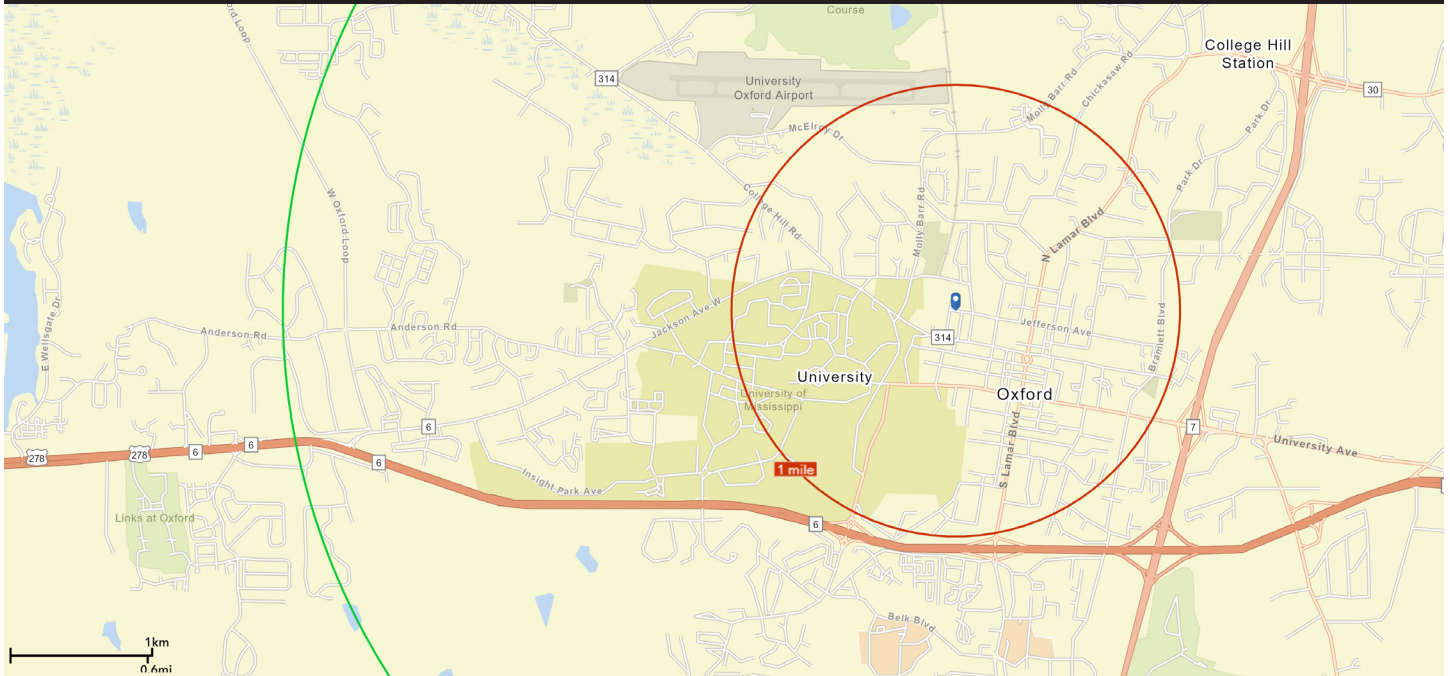
Phone: 901.683.2220

Fax: 901.507.3440

www.mrgmemphis.com/commercial

All information deemed reliable but not warranted.

1200 Jefferson, Suite 200



FOR INFORMATION CONTACT:

Roger McLemore

Vice President

901.507.3428

rmclemore@mrgmemphis.com

 **Makowsky
Ringel
Greenberg** LLC
Multi-Family & Commercial Real Estate

1200 Jefferson, Suite 200



FOR INFORMATION CONTACT:

Roger McLemore

Vice President

901.507.3428

rmclemore@mrgmemphis.com

MR Makowsky
Ringel
Greenberg LLC
Multi-Family & Commercial Real Estate