

800 SF East Memphis Office Space for Lease

1010 June Rd • Memphis, TN 38119



Don't miss out on this excellent opportunity to secure prime office space in East Memphis conveniently located near Poplar Avenue and I-240. Whether you're a startup, small business, or established company, 1010 June Road offers the ideal environment for productivity and success.

FEATURES AND AMENITIES:

Located in the heart of East Memphis with convenient access to major transportation routes, ensuring easy commuting for employees and clients alike. The area is known for its thriving business community and offers a range of amenities, including dining options, shopping centers, and professional services. Convenient Access to Poplar Avenue and I-240.

Current floor plan features two private offices, conference room, storage room, and reception area. Conference room features built-in cabinetry. Small building with good parking providing convenient access for employees and visitors.

800 total SF

Nearby Restaurants:

- Buckleys .3 mi
- Corky's .5 mi
- River Oaks .7 mi
- Memphis Pizza Cafe .8mi
- Capitol Grill 1 mi.
- Jason's Deli 1.1 mi

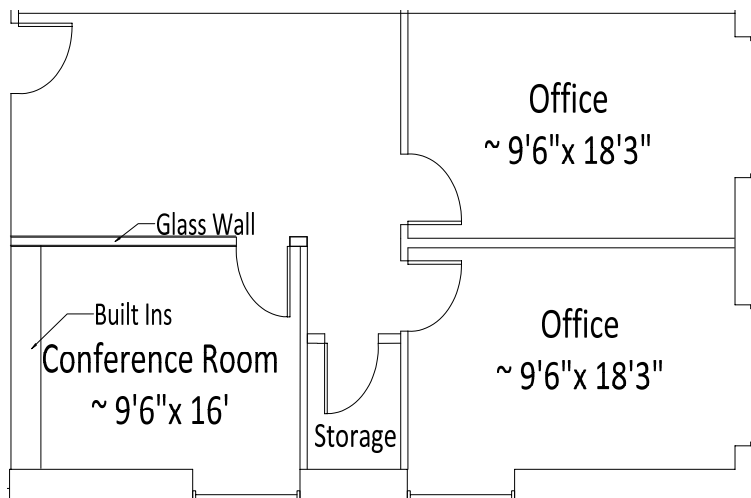
FOR INFORMATION CONTACT:

Michael Greenberg, CCIM, CPM
Chief Executive Officer
901.507.3429
mgreenberg@mrgmemphis.com

Makowsky Ringel Greenberg, LLC
1010 June Road, Suite 200
P.O. Box 241990
Memphis, TN 38124
Phone: 901.683.2220
Fax: 901.507.3440

www.mrgmemphis.com/commercial

Office Space for Lease



Makowsky Ringel Greenberg, LLC
1010 June Road, Suite 200
P.O. Box 241990
Memphis, TN 38124
Phone: 901.683.2220
Fax: 901.507.3440

 **Makowsky
Ringel
Greenberg** LLC
Multi-Family & Commercial Real Estate